



KANO CHAIR



Meet the KANO chair: a revolutionary timber seat where architectural sophistication meets organic warmth. Meticulously crafted from premium FSC solid Ash, its minimalist lines and rustic charm redefine modern commercial design. Whether as a sleek focal point or a bespoke statement upholstered in your choice of fabric or leather, Kano brings timeless elegance to any professional space.

KEY FEATURES

- Solid ash frame
- Ash timber veneer plywood seat and backrest
- Stackable 4 high
- Unparalleled comfort
- Contemporary Design
- Available in matching stools
- 140kg weight capacity

LEAD TIME & WARRANTY

- 2-4 week lead time
- 5 year warranty

OPTIONS

- Upholstered seat pad in COM

DIMENSIONS

- Overall: 815H x 505W x 540D mm
- Seat: 480H x 415W x 415D mm

CERTIFICATIONS

- FSC Certified
- BIFMA Certified

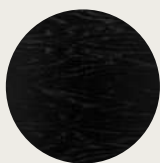




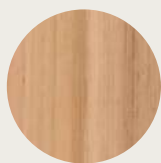
KANO CHAIR

FINISHES

FRAME, BACKREST & SEAT



Black



Oak

UPHOLSTERY WINYA HOUSE FABRIC - CAT. A WARWICK HAWTHORN



Hawthorn
Natural



Hawthorn
Silver



Hawthorn
Pumice



Hawthorn
Taupe



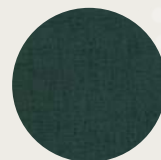
Hawthorn
Blush



Hawthorn
Mist



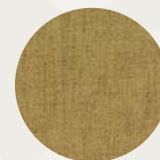
Hawthorn
Mink



Hawthorn
Forest



Hawthorn
Olive



Hawthorn
Manuka



Hawthorn
Seafoam



Hawthorn
Sky



Hawthorn
Denim



Hawthorn
Navy



Hawthorn
Onyx

