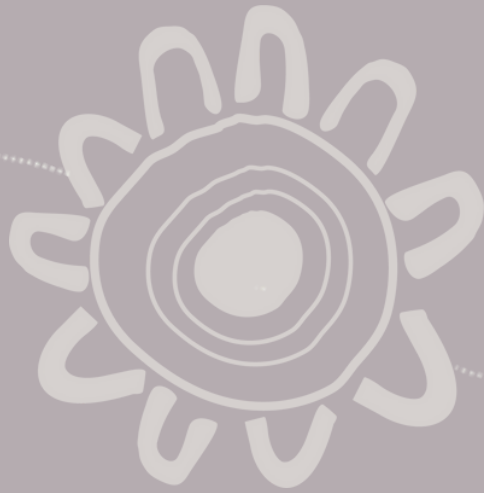




HEALTHCARE CAPABILITIES





ACKNOWLEDGEMENT

At Winya, we acknowledge the Traditional Owners and Custodians of the lands on which we work and we pay our respects to Indigenous Elders past, present and emerging. Winya operates on Ngunnawal, Larrakia, Kurna, Whadjuk Noongar, Turrbal & Yuggera, Kulin, Gadigal and Nipaluna lands. We recognise the diversity and complexity of these cultures and the vital contributions their traditions and cultures have made, and continue to make, to this country. It always was, and always will be Aboriginal land.



WINYA (win-ya): to “**Sit Now**” in Wiradjuri dialect

Winya Indigenous Commercial Furniture is an **Indigenous owned and controlled business** founded in 2015 by Kamilaroi Woman Debbie Barwick, the CEO of the NSW Indigenous Chamber of Commerce and Chairperson of the First Australians Chamber of Commerce, alongside a team of commercial furniture industry professionals.

Winya was established to **increase Indigenous employment and promote economic inclusion** within the Australian furniture industry. As a **profit-for-purpose** business, we work closely with our supply chain to place trainees in meaningful roles and partner with Indigenous businesses across the country — all with the aim of **fostering sustainable economic growth** within the Indigenous business sector.

Winya supplies **commercial furniture for large-scale fit-out projects** for Australia’s State and Federal Government departments, including the ATO, Department of Defence, and Federal Courts, along with major corporate clients like ANZ and CommBank. Through collaborations with major builders like Built, Lendlease, Sitzler, and Multiplex, Winya has been able to expand its programs nationwide. Our approach aligns with the Commonwealth Government's **Indigenous Procurement Policy (IPP)** and **Corporate Reconciliation Action Plans**, fostering growth in Indigenous communities.

Winya’s commitment extends beyond furniture; we aim to set a **new standard for business and social impact**. The only Australian company **awarded by the United Nations** for Leadership in Sustainable Development Goals (SDG) for the Economic Empowerment of Indigenous Peoples, we show that corporate success and ethical responsibility are intrinsically linked.

Delivering commercial furniture with purpose:
Indigenous-led, sustainable, and inclusive.





Indigenous Engagement

The travelling kangaroo track represents Winya's journey toward empowering Indigenous communities through meaningful employment, training, and cultural inclusion. Programs like our House Artist initiative integrate Indigenous art into our furniture, ensuring cultural representation and long-term career pathways.

Our Approach:

- *Walking Together: Indigenous Business Supply Chain*
- *House Artists Program*
- *Indigenous Traineeships & Internships*

Sustainability Practices

The hand print symbolises Winya's commitment to reducing our environmental footprint through sustainable practices and circular economy initiatives. From using recycled materials to repurposing old furniture through our take-back program, it reflects our dedication to environmental stewardship.

Our Approach:

- *Circular Economy*
- *Take-Back Program*
- *Sustainably Certified Products*
- *Australian-Made*

Product Design & Development

The "People and Place" symbol represents Winya's collaborative approach to design, focused on understanding client needs and creating tailored furniture solutions. It reflects our commitment to delivering practical, culturally significant pieces across diverse sectors and spaces.

Our Approach:

- *Custom furniture solutions*
- *Design that celebrates Country*

Product Range

The Honey Ants symbol represents Winya's diligent approach to curating a diverse, functional, and culturally inclusive product range. Like the honey ant, we work tirelessly to deliver tailored commercial furniture solutions that meet the unique needs of every client.

What We Offer:

- *Desks & Workstations*
- *Ergonomic Seating*
- *Soft Seating*
- *Acoustic Solutions*
- *Booths & Pods*
- *Indigenous Collection*

Project Management

The eagle track symbol represents Winya's strength and oversight in managing projects from start to finish. Like the eagle's broad view, our team ensures every stage—from consultation to installation—is handled with precision, delivering seamless, high-quality solutions for large-scale projects.

Our Approach:

- *End-to-End Solution*
- *Product Sourcing for projects*
- *ISO 9001 & ISO 14001 certifications*
- *Affiliated with all Indigenous Chambers of Commerce in Australia*

Delivering Safe, Sustainable, and Culturally Responsive Furniture for Australia's Health Sector



Stellar Modular Lounge

Winya is a **multi-award-winning**, Indigenous-owned commercial furniture manufacturer delivering high-performance, culturally inclusive, and environmentally responsible solutions across Australia. With a **decade of experience** delivering projects in the health sector, we are a trusted supplier to hospitals, aged care providers, mental health facilities, and community health organisations nationwide. Our approach blends **durable, clinically appropriate design** with social and environmental impact — making us a preferred partner for healthcare fit-outs that demand more.

Our **national reach** and **established reputation** mean we can work across metropolitan, regional, and remote settings with consistent quality, cultural competency, and reliable delivery outcomes. Winya is a Supply Nation Registered and Certified business and adheres to the Indigenous Procurement Policy (IPP), ensuring every healthcare project contributes directly to **Indigenous economic inclusion** and **local employment outcomes**.



Specialised Healthcare Experience

Healthcare is one of the most complex sectors in the built environment — it demands precision, compliance, resilience, and empathy. Winya understands these pressures firsthand. Over the past ten years, we have delivered hundreds of projects to public hospitals, Aboriginal-controlled health services, aged care facilities, recovery centres, transitional accommodation units, and mental health environments.

Whether fitting out high-traffic waiting areas in urban hospitals or supplying culturally safe furnishings to remote Indigenous clinics, we tailor our designs to each environment. We've worked closely with government health agencies, not-for-profit providers, and community-controlled organisations to deliver installations that align with infection control protocols, environmental compliance, and social procurement goals.

Each project brings its own mix of clinical functionality, user safety, cultural expectation, and long-term durability. We respond to this complexity with a solution-based approach informed by:

- Infection control requirements
- Operational workflows and staff movement
- Trauma-informed environmental design
- Diverse user needs including bariatric, ambulant, and aged patients
- Cultural safety and representation for Aboriginal and Torres Strait Islander communities
- Remote access logistics and delivery challenges





Designing for Wellness, Inclusion, and Practicality

The environments in which patients receive care can significantly influence their recovery, comfort, and overall wellbeing. At Winya, we design with this in mind — blending clinical practicality with human-centred design principles that promote inclusion and dignity.

Our team applies a rigorous lens to technical performance, incorporating the following considerations across all healthcare product development and selection:



Ergonomics & Accessibility

We design with the full spectrum of users in mind — from children to the elderly, ambulant to bariatric. Furniture dimensions are tailored for ease of use, with seat heights, armrests, and depths calibrated for comfort and support. For aged care or outpatient settings, chairs often feature higher backs and firm, supportive cushioning to aid postural stability and safe sit-to-stand transitions.



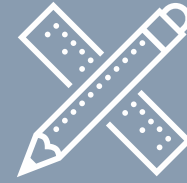
Modularity & Layout Adaptability

Many healthcare environments are dynamic: treatment rooms become consult spaces, and waiting rooms are reconfigured for distancing or family areas. Winya offers modular furniture that adapts to these changing layouts. Linkable seating, freestanding ottomans, and modular sofas allow reconfiguration without compromising infection control or aesthetics. This is particularly valuable in multi-purpose clinics or transitional accommodation.



Consultation & Co-Design

Co-design is fundamental to our healthcare work. Winya collaborates with architects, clinical staff, Aboriginal liaison teams, and end users to ensure that every piece of furniture meets its intended function, aesthetic goal, and cultural intent. We engage in iterative feedback loops and conduct early-stage sample reviews and mock-ups to test suitability in situ. In Aboriginal-controlled environments, this process includes consultation with local Elders and community leaders, integrating cultural symbolism in respectful, meaningful ways.



Initiation and Design Brief Process

Our project process begins with a detailed design briefing and consultation. This includes site visits (where possible), project scoping, needs assessment, and integration of clinical and cultural requirements. Winya collaborates with healthcare providers, architects, and project managers to ensure that every space is designed for operational efficiency, infection control, and wellbeing.

We engage with facility managers, procurement officers, Aboriginal liaison units, and clinical staff to tailor our design approach. Concepts are refined through feedback loops, sample reviews, and visual mock-ups where needed. Our team ensures that spatial efficiency, cultural elements, and functional performance are mapped from the outset, helping streamline procurement and reduce risk later in the project lifecycle.

We also support prototype development and early in-use testing with clinical teams when needed, to ensure that materials, dimensions, and ergonomic design align with specific departmental use cases.



Cultural Safety & Indigenous Design

Cultural safety is not an afterthought — it is embedded in our design thinking. Winya has worked with dozens of Aboriginal health services and First Nations organisations to embed meaningful cultural representation in clinical and community health spaces. This includes the use of Indigenous fabrics, commissioned artworks, yarning circle furniture layouts, and colour palettes drawn from local Country.

We engage directly with local Indigenous artists and ensure royalties are paid for use of their intellectual property. All cultural design elements are reviewed with stakeholders to ensure authenticity, relevance, and alignment with cultural protocols. This approach creates healing environments where Aboriginal patients and families feel seen, safe, and welcome.



Project Delivery, Installation & Fitout

Winya manages end-to-end logistics and a trained delivery and installation crew capable of operating across all states and territories. All furniture arrives pre-assembled or flat-packed with full quality assurance documentation. Where needed, our team delivers staged installations to accommodate multi-phase construction, infection control regulations, or ward rotations.

Installations are overseen by experienced site managers, ensuring minimal disruption and full alignment with safety protocols. We are familiar with the handling requirements of clinical settings and ensure PPE use, infection control compliance, and full waste removal as part of our fitout process.

We also offer induction training for site access and maintain white card-accredited staff. Final handover includes testing and adjustment of furnishings, and handoff documentation for asset registers.



Post-Occupancy Support and Warranty

Our service doesn't end at install. Winya provides extensive post-occupancy support including product adjustments, warranty servicing, and reconfiguration guidance. Where healthcare environments evolve — through ward redesigns, new technology needs, or layout changes — our modular systems can adapt, with ongoing advice and re-supply as needed.

Standard warranties apply across all product lines, with extended options available for specific environments such as aged care or mental health. Should repairs be required, our support team coordinates rapid replacements or on-site fixes via our national partner network.

Procurement & Reporting Support

We understand the documentation required for public tenders, health infrastructure submissions, and IPP targets.

Winya provides:

- Full certification documentation
- Manufacturer's warranties
- Green Star credits and compliance mapping
- Supply Nation certification letters for IPP reporting
- ESG-aligned impact data
- Material safety data sheets (MSDS)

Technical Design Considerations in Healthcare



Healthcare furniture is subject to intense demands — not only in terms of durability and hygiene, but also in supporting the therapeutic and operational goals of the space. At Winya, our technical design approach ensures that every item we supply meets the highest standards of safety, flexibility, and user experience.

Ergonomics & Accessibility

We design with the full spectrum of users in mind — from children to the elderly, ambulant to bariatric. Furniture dimensions are tailored for ease of use, with seat heights, armrests, and depths calibrated for comfort and support. For aged care or outpatient settings, chairs often feature higher backs and firm, supportive cushioning to aid postural stability and safe sit-to-stand transitions.

Inclusive & Bariatric Seating

We provide AFRDI Level 6-tested seating options designed to support higher weight capacities (up to 300kg+), ensuring that no patient feels excluded. Our inclusive range includes chairs with reinforced frames, wider arms for ease of movement, and discreet visual continuity so they blend seamlessly into the environment.

Modularity & Layout Adaptability

Many healthcare environments are dynamic: treatment rooms become consult spaces, and waiting rooms are reconfigured for distancing or family areas. Winya offers modular furniture that adapts to these changing layouts. Linkable seating, freestanding ottomans, and modular sofas allow reconfiguration without compromising infection control or aesthetics. This is particularly valuable in multi-purpose clinics or transitional accommodation.



Yanada Modular Lounge

Safety-First Design Features

In trauma-informed or mental health facilities, safety is paramount. Our furniture can be specified with:

- Rounded corners and radius edges to prevent injury
- Anti-ligature elements designed for high-risk areas
- Tamper-proof fixings and base plates to prevent movement or misuse
- Concealed seams and integrated glides to eliminate hiding spots for contraband
- These considerations are often implemented discreetly, maintaining a therapeutic, non-institutional appearance while meeting behavioural health compliance

Integrated Power and Allied Health Desking

In modern allied health and consult settings, access to power and data is critical. Winya provides desks and tables with integrated cable management, power/data outlets, and height-adjustable options. This enables efficient workflows for telehealth, on-site documentation, or electronic equipment use without creating safety hazards or clutter.

Trauma-Informed & Sensory Design

We consider not only what furniture looks like, but how it feels to use. Low-profile silhouettes reduce visual intimidation. Zoned seating can help patients feel secure or offer personal space. In trauma recovery centres, colour palettes, textures, and acoustic panels can all contribute to emotional safety — especially when paired with input from mental health clinicians or community Elders.

Finishes and Performance Materials

The materials used in healthcare furniture are central to both infection control and the comfort of patients, visitors, and staff. At Winya, we carefully select and test materials for durability, hygiene compatibility, and environmental safety — ensuring each finish performs under high-scrub protocols while contributing to a calm and welcoming environment.



Antibacterial and Antimicrobial Finishes

All upholstered surfaces can be specified with antibacterial and antimicrobial treatments, helping prevent surface-level transmission of bacteria and viruses. These finishes are bonded to the fabric or incorporated into the vinyl structure itself, ensuring they do not wear off with cleaning. For higher-risk environments, these can be combined with seamless, stitch-free construction to further reduce bacterial harborage points.



Low-VOC and Non-Toxic Components

Every effort is made to minimise volatile organic compound (VOC) emissions from our furniture. We prioritise water-based adhesives, powder-coated metals, and low-emission boards and substrates. These selections are critical in enclosed clinical environments, where indoor air quality directly affects vulnerable populations.

We commonly use:

- E0-rated board (formaldehyde-free)
- FSC-certified timber (responsibly sourced)
- Low-VOC laminates and finishes (for cleaner air quality)

These materials support not only regulatory compliance but also certification frameworks like Green Star and WELL.



High-Performance Upholstery and Foam

Our upholstery options include bleach-cleanable, waterproof, and fire-retardant fabrics that meet both comfort and compliance needs. Many are GECA and GREENGUARD certified to ensure low emissions and high indoor air quality. Foams are selected for pressure redistribution and resilience, supporting long hours of use in high-traffic environments. In mental health or aged care settings, foam compositions can be specified to meet fire-retardancy and resistance to fluid penetration.



Powder Coating vs. Electrophoretic Coating

For metal components — such as chair frames, legs, or underframes — we primarily use powder coating due to its durability, uniform finish, and eco-friendly application (zero solvents, low emissions). Where required for added chemical or corrosion resistance (e.g. in humid environments or near sterilisation areas), we offer electrophoretic coating (E-coat) as a pre-treatment. This ensures deep-set protection inside and out, ideal for long-term durability.

Safety, Risk & Infection Control



In healthcare environments, the smallest design oversight can pose serious clinical risk. That's why Winya approaches safety and infection control not as an add-on — but as a core design principle embedded from the outset.

In healthcare environments, the smallest design oversight can pose serious clinical risk. That's why Winya approaches safety and infection control not as an add-on — but as a core design principle embedded from the outset.

Key safety and infection control features include:

- Non-porous & bleach-cleanable upholstery: Available across all major seating and surface types, including antimicrobial options with GECA and GREENGUARD certification.
- Seam-free & concealed seams: Where required, we use welded seams or internal stitching to prevent microbial harbourage; critical in aged care facilities, and high-risk wards.
- Raised & open-leg designs: Allow for easy cleaning beneath seating and tables, supporting high-scrub protocols across cleaning shifts.
- Tamper-proof fixings & secure components: Especially important in behavioural health, aged care dementia wards, and transitional care environments.
- Rounded corners & anti-ligature options: Available across multiple collections to reduce self-harm risks in mental health settings or trauma-recovery centres.
- Heavy-duty glides & stabilisers: Reduce tipping risks and allow for secure placement without compromising cleaning access.

We also ensure our delivery and installation processes are health-safe and risk compliant. This includes:

- PPE-equipped installers trained in clinical setting protocols
- Non-contaminant packaging and transport materials
- Scheduled delivery to align with infection control measures on active healthcare sites

Compliance and Certifications

Compliance is not just a checkbox — it's the foundation of trust in healthcare environments. Winya's manufacturing process is guided by some of the highest health, safety, and environmental standards in the industry. Every product we deliver into a hospital, clinic, aged care centre, or mental health facility is designed to meet strict procurement, clinical, and regulatory benchmarks.

Clinical and Environmental Certifications

Our certifications include:

- **AFRDI Level 6:** Endurance tested for severe commercial use, including bariatric-rated seating and high-traffic durability.
- **AFRDI Green Tick:** Recognised sustainability certification assessing recyclability, low-toxicity, and responsible sourcing.
- **GECA (Good Environmental Choice Australia):** Certification for materials with verified lower environmental impact and ethical supply chains.
- **GREENGUARD:** Assures low chemical emissions for healthier indoor environments — critical for enclosed clinical spaces.
- **ISO 9001:** International standard for Quality Management Systems, ensuring product consistency, performance, and traceability.
- **ISO 14001:** Environmental Management System certification, guiding our sustainable manufacturing and continuous improvement.
- **ISO 45001:** Occupational Health and Safety certification, supporting safe workplaces for both staff and subcontractors.
- **FSC-certified Timber:** All timber is sourced from responsibly managed forests.
- **E0 Board Certification:** Our standard for board substrates, indicating ultra-low formaldehyde emissions and safe for indoor use.



Baluwaa Focus Booth

Cultural Representation & Yarning Circles



Creating culturally safe healthcare environments is not optional — it's essential. For Aboriginal and Torres Strait Islander patients, design that reflects identity, community, and Country can play a powerful role in improving comfort, participation, and health outcomes. At Winya, we embed cultural representation throughout our healthcare projects to foster dignity, connection, and trust.

Our cultural design features include:

- **Indigenous-designed fabrics:** Authentically created by Aboriginal artists and licensed for use in clinical-grade upholstery.
- **Art-licensed furniture panels:** Featuring printed timber or laminate surfaces that incorporate artist-approved patterns and storytelling.
- **Zone-specific colour palettes:** Chosen in collaboration with local communities to reflect Country, promote calm, and reduce clinical detachment.
- **Wayfinding and visual storytelling:** Culturally relevant graphics and layout elements that support intuitive navigation and emotional grounding.



One of the most impactful features in culturally responsive healthcare spaces is the yarning circle — a layout configuration that fosters trust, storytelling, and therapeutic conversation. Traditionally used as a space for open dialogue and healing, yarning circles are increasingly integrated into clinical and community health spaces. Winya supports the design and delivery of yarning circles across:

- Aboriginal-controlled health clinics
- Community hubs and family support services
- Trauma recovery centres
- Aged care and palliative environments

These areas are designed using soft seating, round layouts, and grounded visual cues that reflect Indigenous values of shared voice and deep listening. The inclusion of yarning circles not only supports cultural safety, but also aligns with trauma-informed care principles.

Every cultural element used in a Winya project is accompanied by transparent artist licensing, ethical sourcing, and economic return to the communities we work with. Cultural safety is not just about visual representation — it's about ensuring Aboriginal and Torres Strait Islander people feel seen, respected, and safe in every healthcare space we help create.



PROJECT: VICTORIAN HEART HOSPITAL
CLIENT: MONASH HEALTH
STATE: VIC



SCOPE OF WORK:

Victorian Heart Hospital was looking to upgrade a multitude of waiting areas across multiple floors to create a more harmonious, functional and comfortable space. We partnered with them to provide chairs with high and low backs for the different needs of the areas, and a wide range of fabric colours.

SOME PRODUCTS SUPPLIED

- **Muse Arm Chair** - Perfect for reception or waiting areas, upholstered in high performance vinyl that is waterproof, bleach-cleanable and features a fire tested, heavy commercial rating, perfect for healthcare applications.
- **Delphi High Back Arm Chair** - Perfect for reception or waiting areas, upholstered in high performance vinyl that is waterproof, bleach-cleanable and features a fire tested, heavy commercial rating, perfect for healthcare applications.





PROJECT: MIWATJ HEALTH ABORIGINAL CORPORATION
CLIENT: N/A (DIRECT CONTRACT)
STATE: NT



SCOPE OF WORK:

Miwatj Health Aboriginal Corporation was looking to refurnish their office space to make it more functional and welcoming. With such an important mission to protect and improve the Aboriginal community's health, it was essential to also introduce more cultural elements using a wide range of fabrics on our ottomans throughout the various areas.

SOME PRODUCTS SUPPLIED

- **Peak Tub Chairs** - Perfect for reception or break out areas
- **Round Ottomans With Indigenous Fabric** - Using a multitude of various prints from Indigenous artists, to use as seats or foot rests
- **Vogue Range Chairs** - With and without upholstered seat pads for the kitchen and meeting rooms
- **Hugo Low & High Stools** - For kitchen tables of various heights
- **Kali Mesh Task Chair** - Providing ample lumbar support for users throughout their work day.
- **Configure Sit Stand Desks With Screens** - Creating a flexible and private work environment throughout the day





PROJECT: SUNSHINE HOSPITAL
CLIENT: WESTERN HEALTH
STATE: VIC



SCOPE OF WORK:

The Sunshine Hospital was working on their emergency department redevelopment to accommodate more patients and create a welcoming environment with space additions. One of them included a new waiting room which Winya furnished to make down time more pleasant for patients and anyone accompanying them.

PRODUCTS SUPPLIED

- **Custom Parcel Modular Lounge** - Perfect for reception or break out areas with various colours from fabric that is bleach-cleanable and features a fire tested, heavy commercial rating with protective HealthGuard® properties; as well as sections with an Indigenous artist's prints, also with Oeko-Tex® certified yarn and mill applied HealthGuard® antimicrobial finish.
- **Delphi Arm Chair with Timber base** - Featuring the same HealthGuard® properties fabrics as the Parcel Lounge.
- **Delphi Coffee Table** - Creating a relaxed and practical waiting space





Winya Indigenous Furniture
www.winya.com.au
info@winya.com.au
1300 184 799



First Australians
Chamber of Commerce
& Industry

